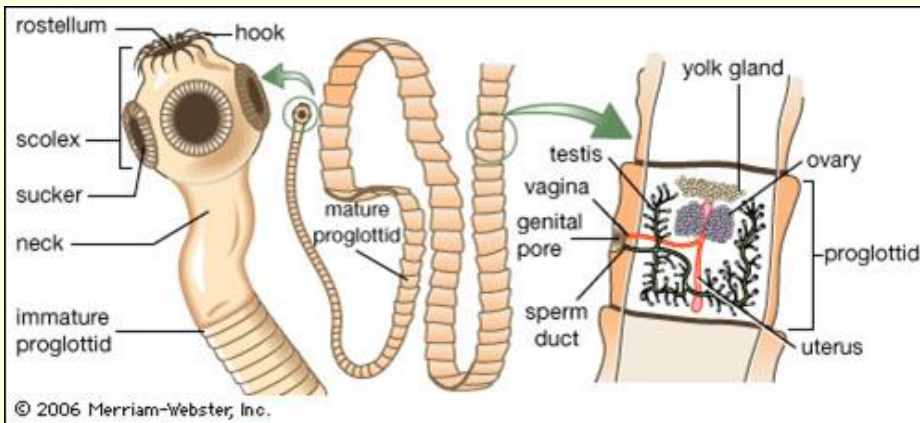


# Platyhelminthes (Cacing pipih)



- Ciri
- Daur Hidup
- Peranan

[http://www.iptek.net.id/ind/pd\\_invertebrata/index.php?mnu=2&id=8](http://www.iptek.net.id/ind/pd_invertebrata/index.php?mnu=2&id=8)

# Diskusi Platyhelminthes

---

- Apa ciri cacing platyhelminthes?
- Apa ciri cacing trematoda?
- Apa ciri cacing turbelaria?
- Apa ciri cacing cestoda?
- Bagaimana daur hidup cacing Fasciola hepatica?
- Bagaimana kemampuan regenerasi cacing planaria?
- Apa peranan cacing platyhelminthes bagi manusia?

# Ciri Platyhelminthes



- Triploblastik aselomata
- Pipih dorsoventral
- Sistem pencernaan (usus) belum ada → masih berupa GASTRODERMIS
- Sel api --- flame cell sebagai alat ekskresi
- Kemampuan regenerasi
- Ada yang parasit

# Klasifikasi Platyhelminthes



- Cacing berambut getar (**Turbellaria**)
- Cacing Hisap (**Trematoda**)
- Cacing Pita (**Cestoda**)



Dugesia  
(Turbellaria)



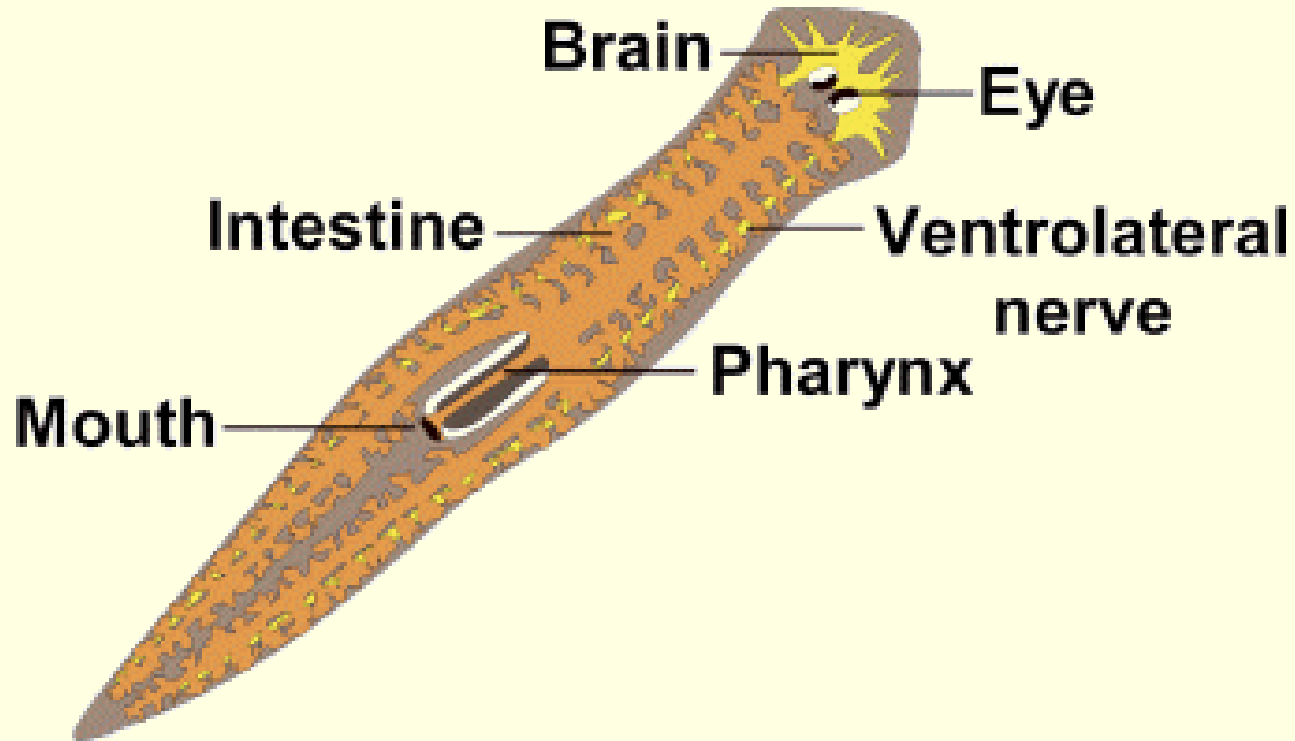
Fasciola  
(Trematoda)



Taenia  
(Cestoda)

# PLANARIA/DUGESIA

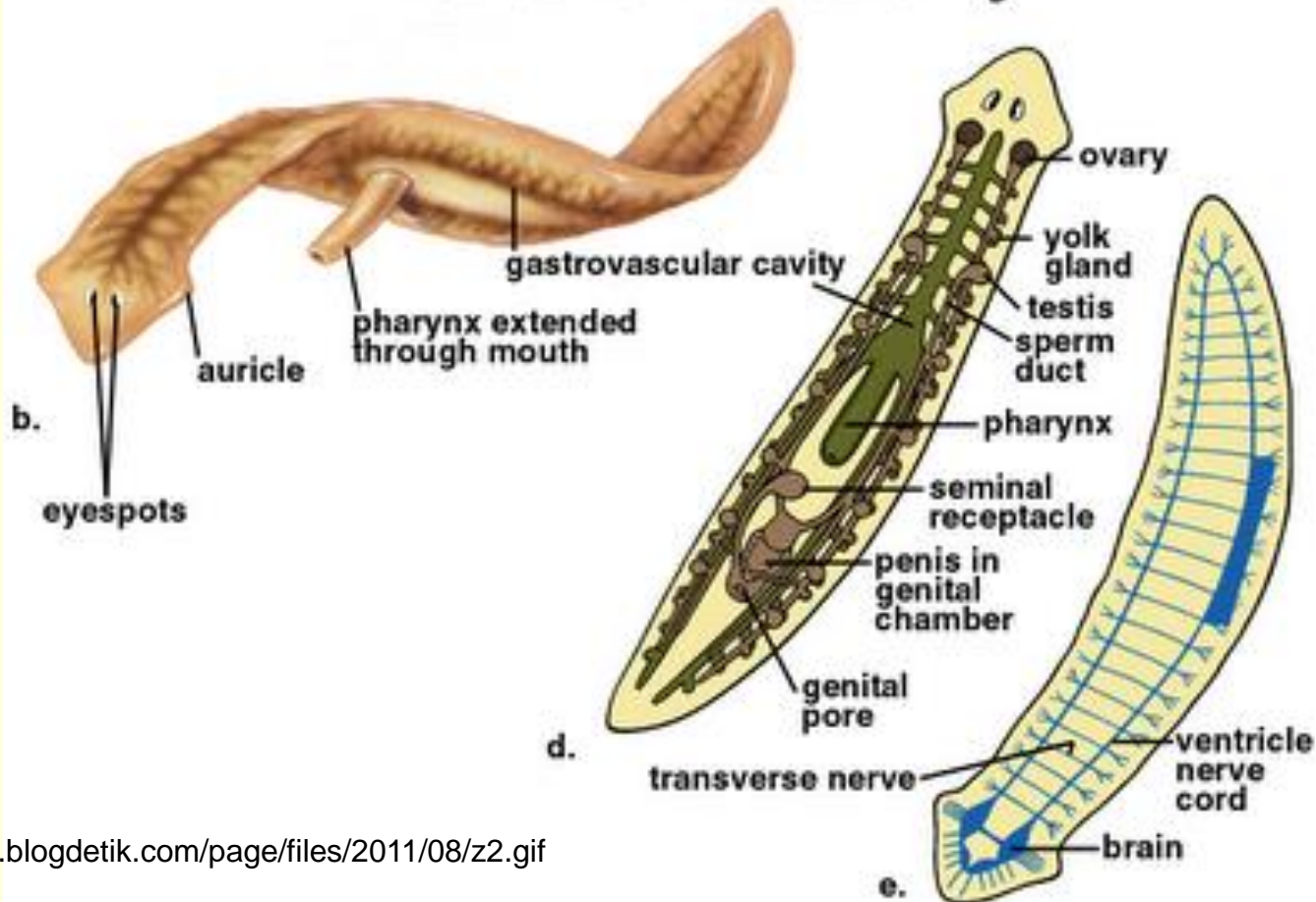
---

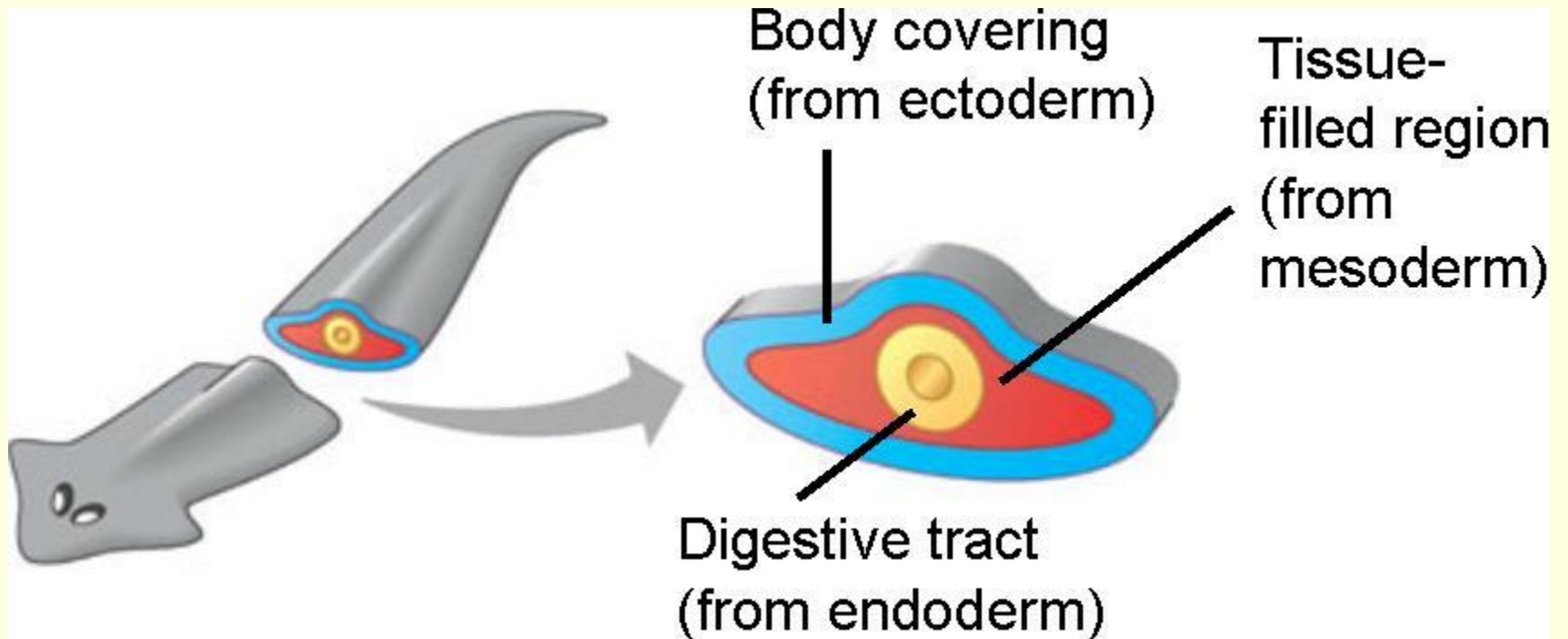


# ANATOMI CACING PIPIH

Copyright © The McGraw-Hill Companies, Inc. Permission required for reproduction or display.

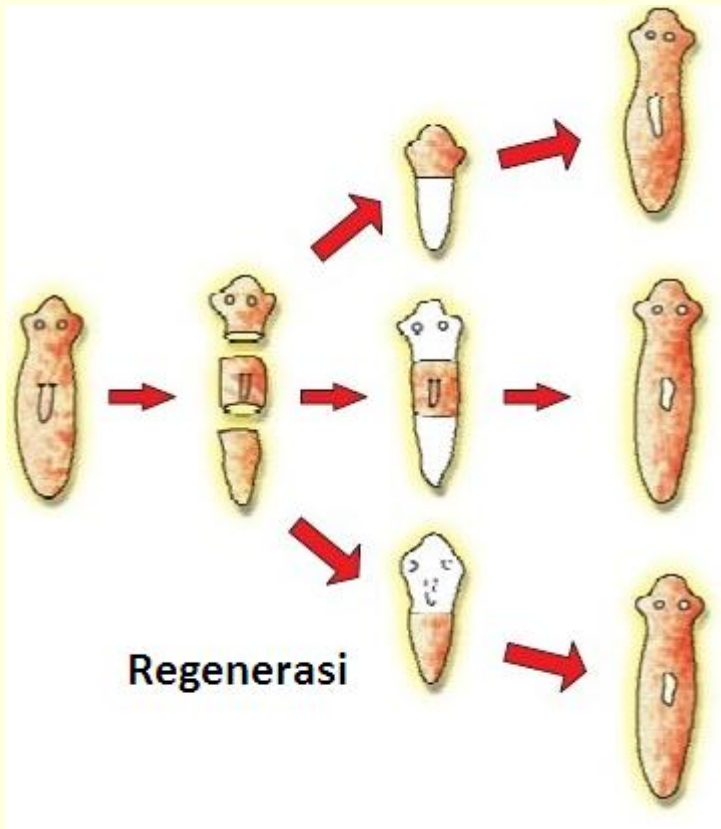
## Planarian anatomy





[http://bio1151b.nicerweb.net/Locked/media/ch32/32\\_08TriploblasticBauplanC.jpg](http://bio1151b.nicerweb.net/Locked/media/ch32/32_08TriploblasticBauplanC.jpg)

# Regenerasi Cacing

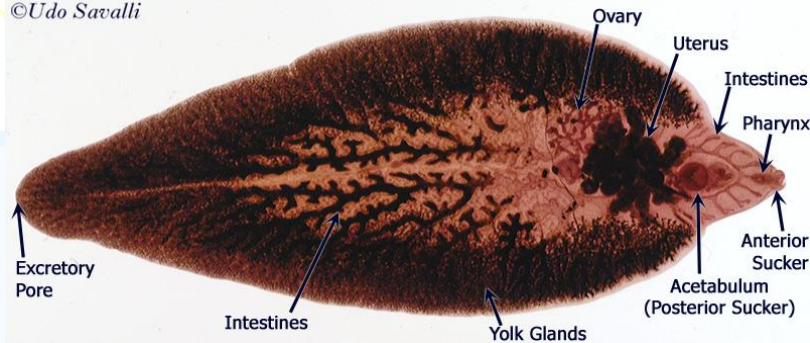


Bagian tubuh yang terpotong dapat berkembang menjadi cacing baru

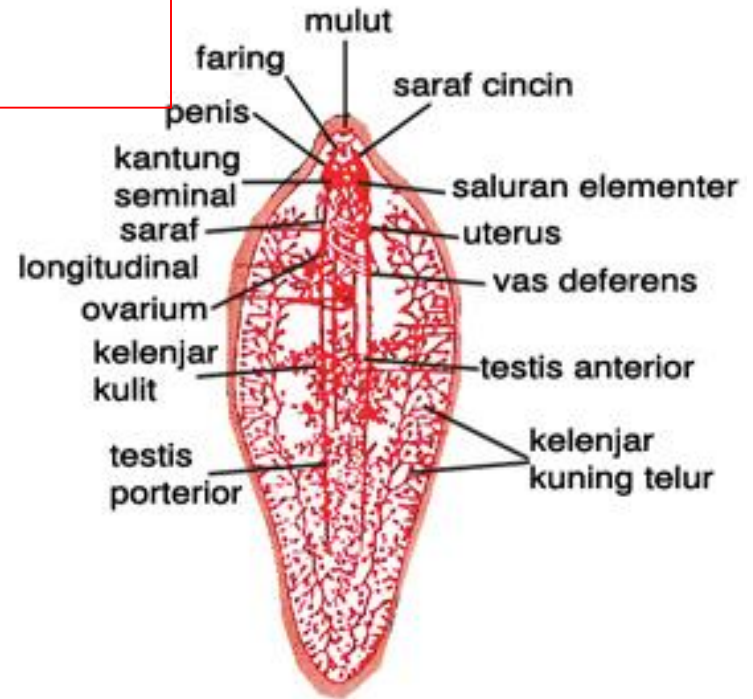


# SISTEM ORGAN Cacing Hisap

©Udo Savalli

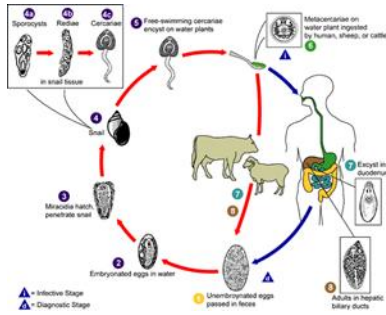


**Fasciola (Cacing hati)**

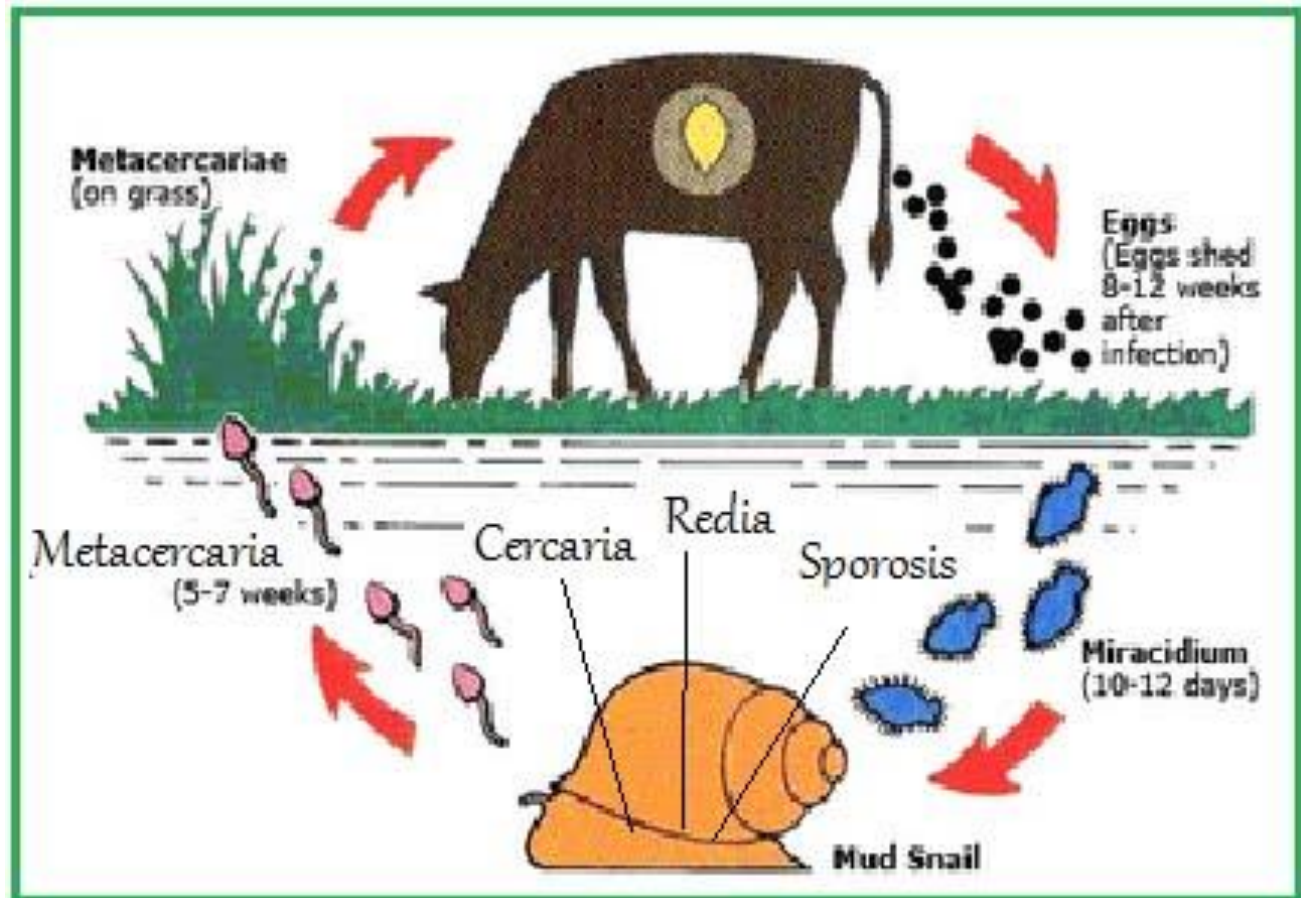


**BERSIFAT HERMAPRODIT.**

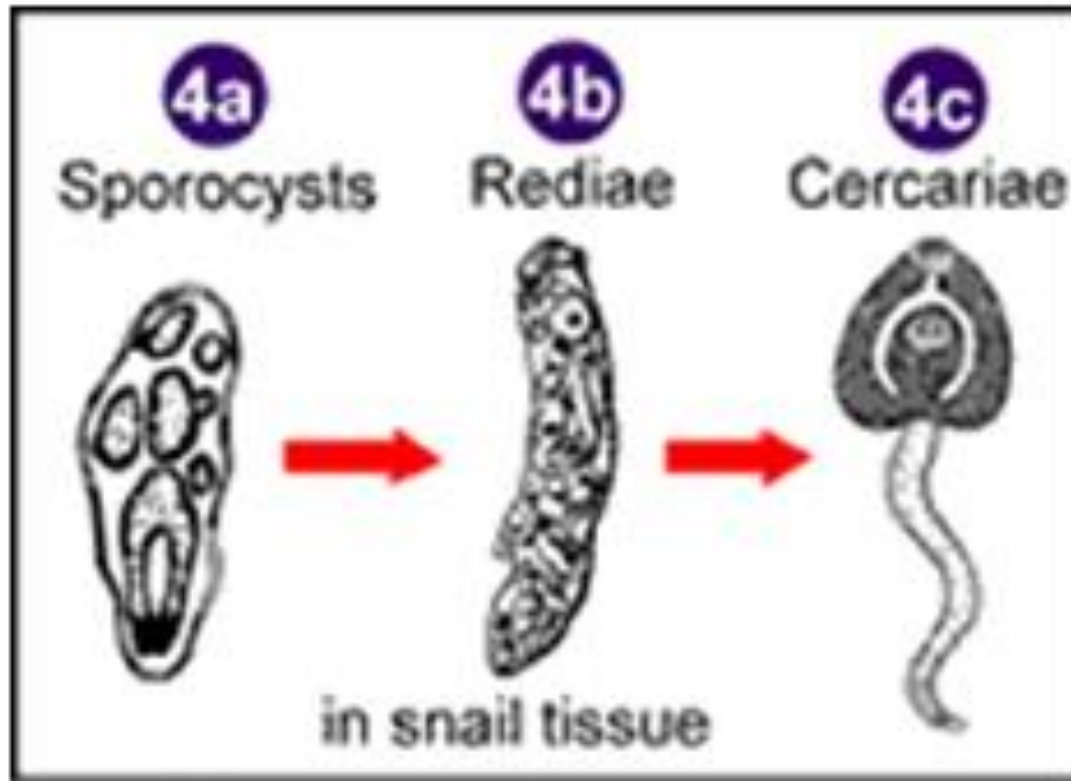
<http://www.savalli.us/BIO385/Diversity/05.Platyhelminthes.html>



# SIKLUS HIDUP

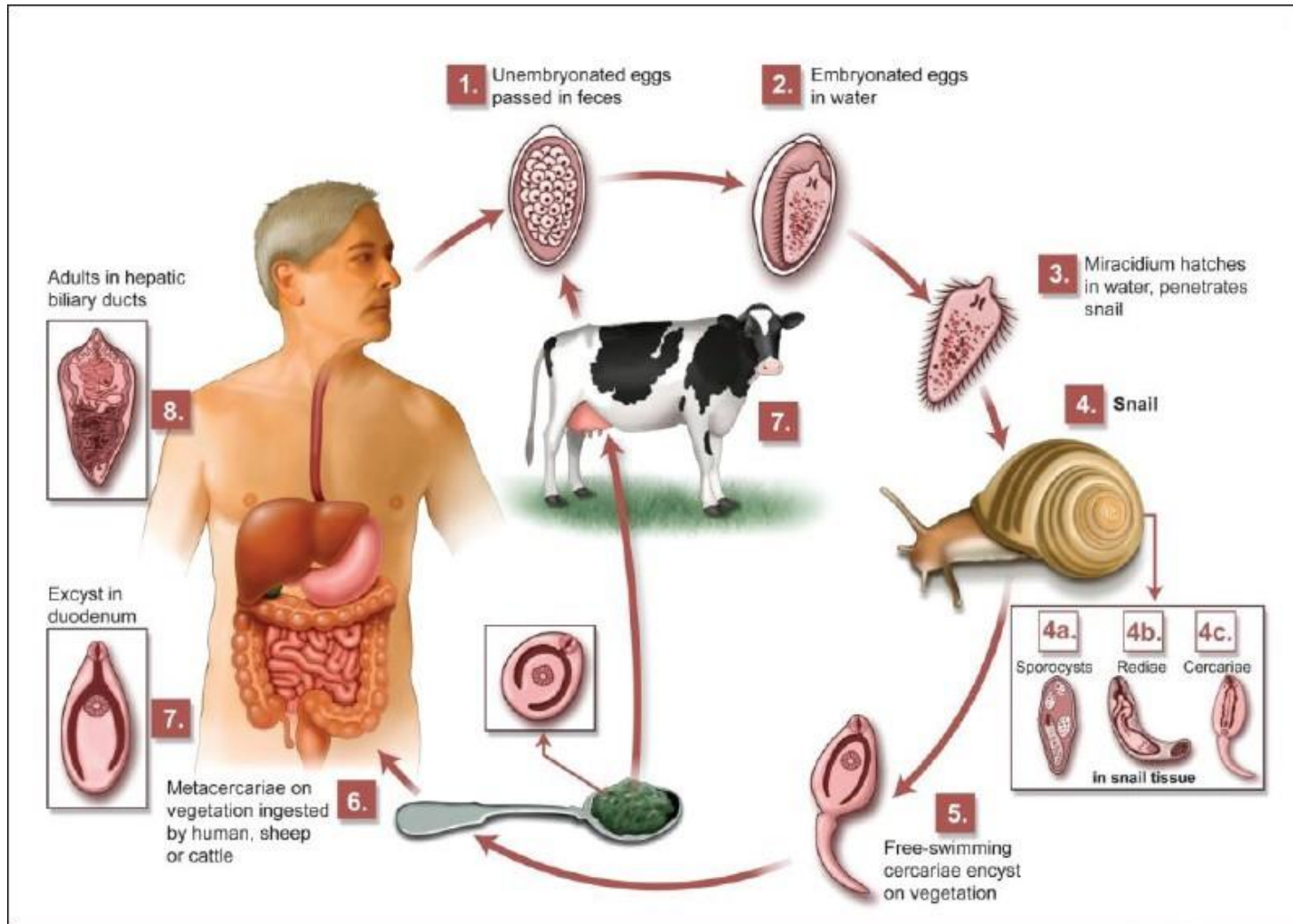


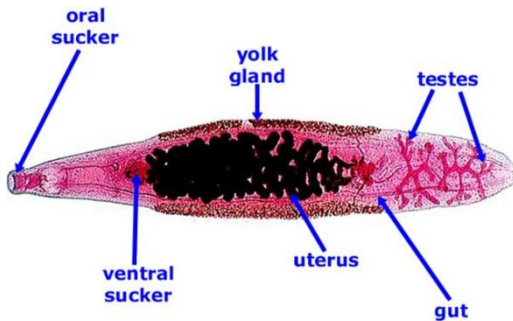
# LARVA PADA KEONG



SERKARIA SELANJUTNYA BERKEMBANG MENJADI KISTA **METASERKARIA** YANG DAPAT MENULAR MELALUI RUMPUT/SAYURAN( TANAMAN AIR)

# Penularan ke Manusia

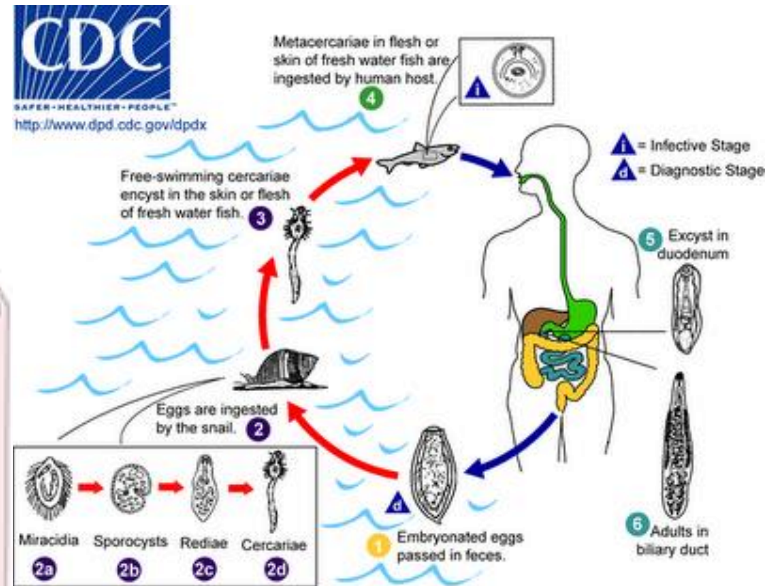




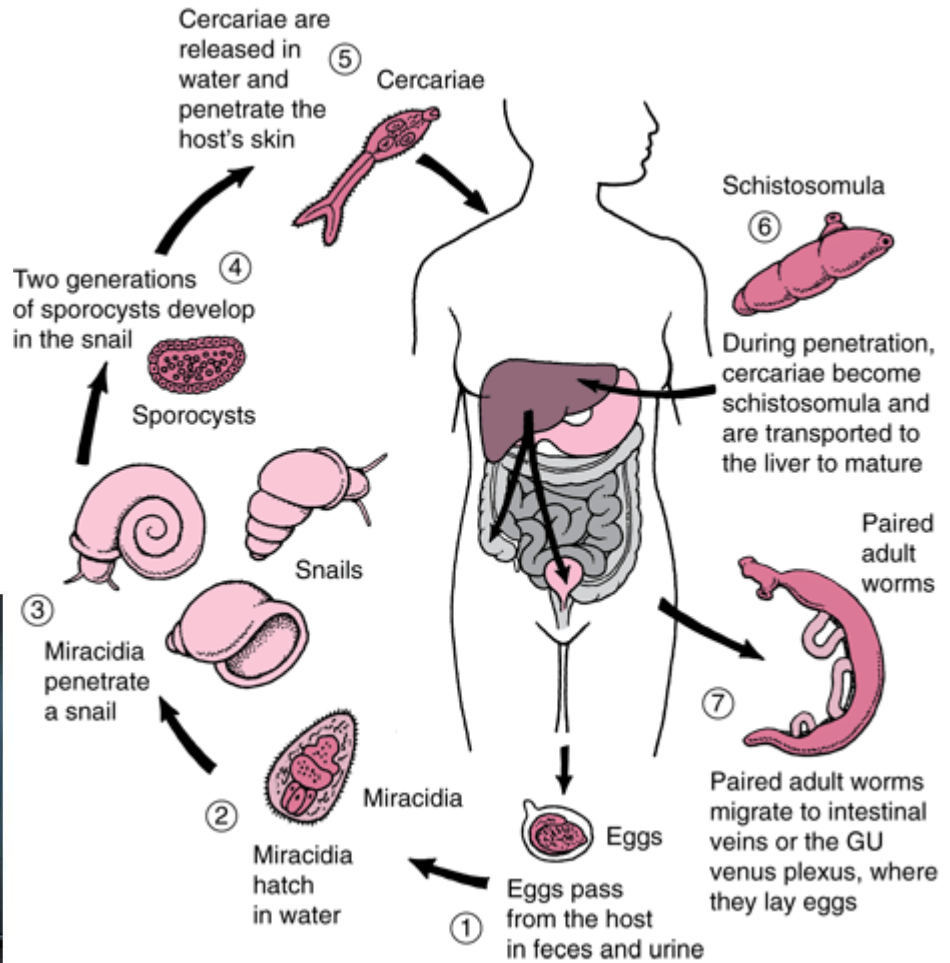
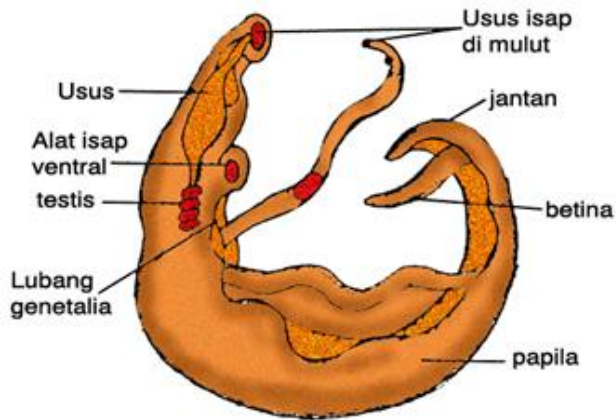
# Clonorchis sinensis

## Symptoms of Raw fish infection

<p><b>Chlororchiasis</b></p> <p><b>Eyes and skin</b></p> <ul style="list-style-type: none"> <li>- Jaundice</li> </ul> <p><b>Liver</b></p> <ul style="list-style-type: none"> <li>- Enlargement</li> <li>- Tenderness</li> </ul> <p><b>Gastrointestinal</b></p> <ul style="list-style-type: none"> <li>- Nausea</li> <li>- Diarrhea</li> <li>- Vomiting</li> <li>- Abdominal pain</li> <li>- Loss of appetite</li> </ul> <p><b>Anisakiasis</b></p> <p>Sudden, severe pain</p>	<p><b>Diphyllobothrium</b></p> <p><b>Central</b></p> <ul style="list-style-type: none"> <li>- Irritability</li> </ul> <p><b>Skin</b></p> <ul style="list-style-type: none"> <li>- Tingling</li> <li>- Numbness</li> </ul> <p><b>Heart</b></p> <ul style="list-style-type: none"> <li>- Increased heart rate</li> </ul> <p><b>Muscular</b></p> <ul style="list-style-type: none"> <li>- Weakness</li> </ul> <p>Vague abdominal discomfort</p>
--	--



# Schistosoma japonicum



# Tahap perkembangan larva Cacing Hati



- 
- Telur --- **terbawa tinja (feses)**
  - Larva mirasidia ---- **dalam air**
  - Sporokista
  - Larva redia
  - Larva Serkaria
- } ---- **KEONG**
- Kista metaserkaria ---- **Menempel TUMBUHAN AIR**
  - Cacing dewasa --- **dalam hati ternak**

# Tahap perkembangan larva Clonorchis sinensis

- Telur --- **terbawa tinja (feses)**
- Larva mirasidia ---- **dalam air**
- Sporokista
- Larva redia } ---- **keong**
- Larva Serkaria }
- Kista metaserkaria ---- **IKAN air tawar**
- Cacing dewasa --- **dalam hati**  
**MANUSIA**

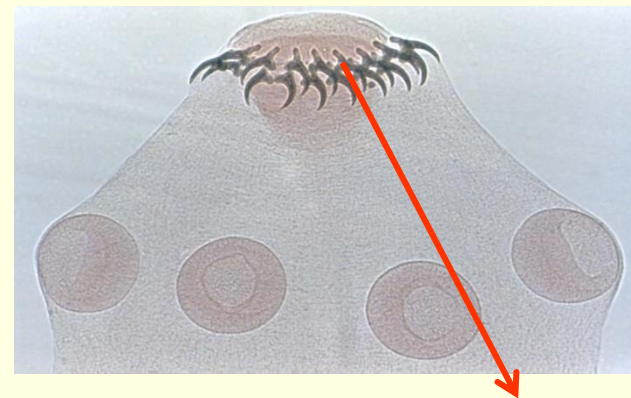




# CACING PITA



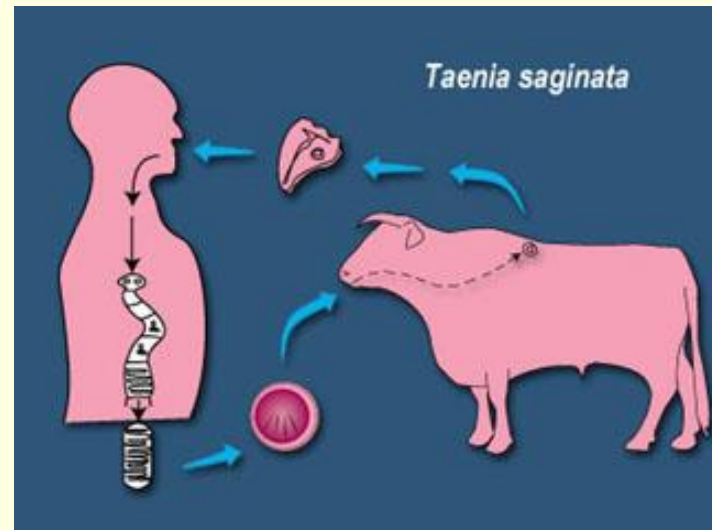
TAENIA SP, Cacing Pita



Kait

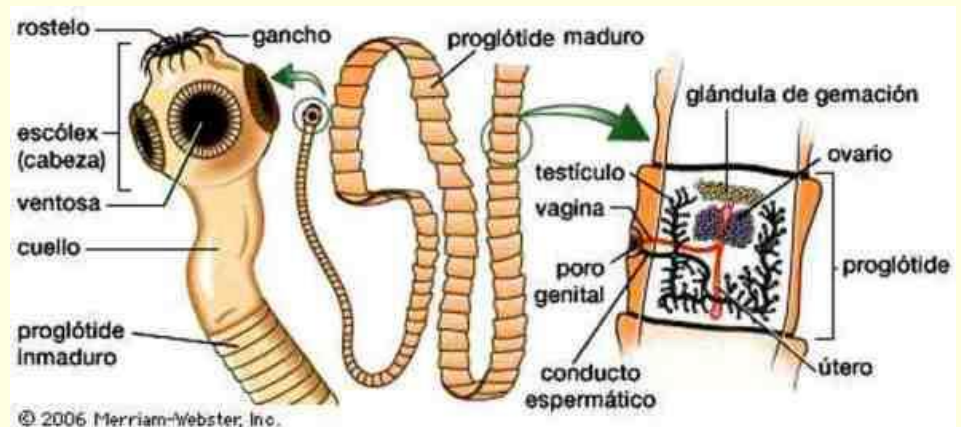
# Ciri cacing pita ( *Taenia sp* )

- Terdiri Proglotid ( ruas semu)
- Memiliki skoleks ( kepala)
- Alat kait pada kepala
- Tidak ada alat pencernaan
- Hermaprodit
- Parasit



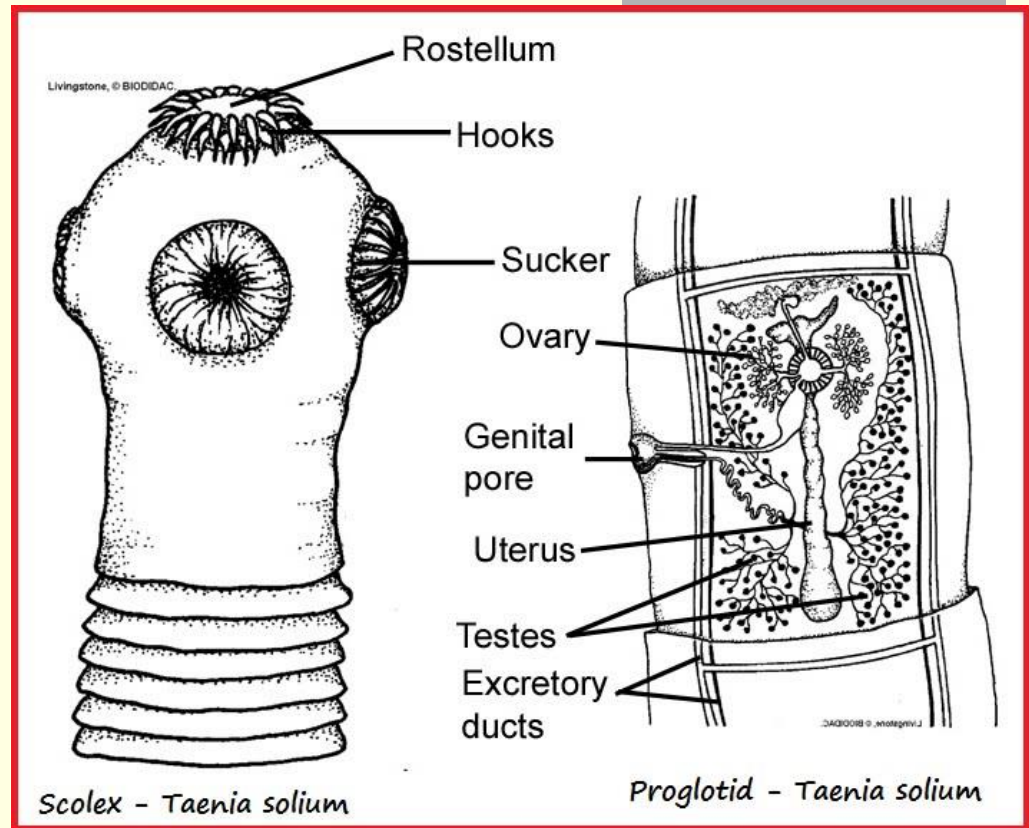
# CONTOH CACING PITA

- Taenia solium → perantaraan BABI
- Taenia saginata → perantaraan SAPI



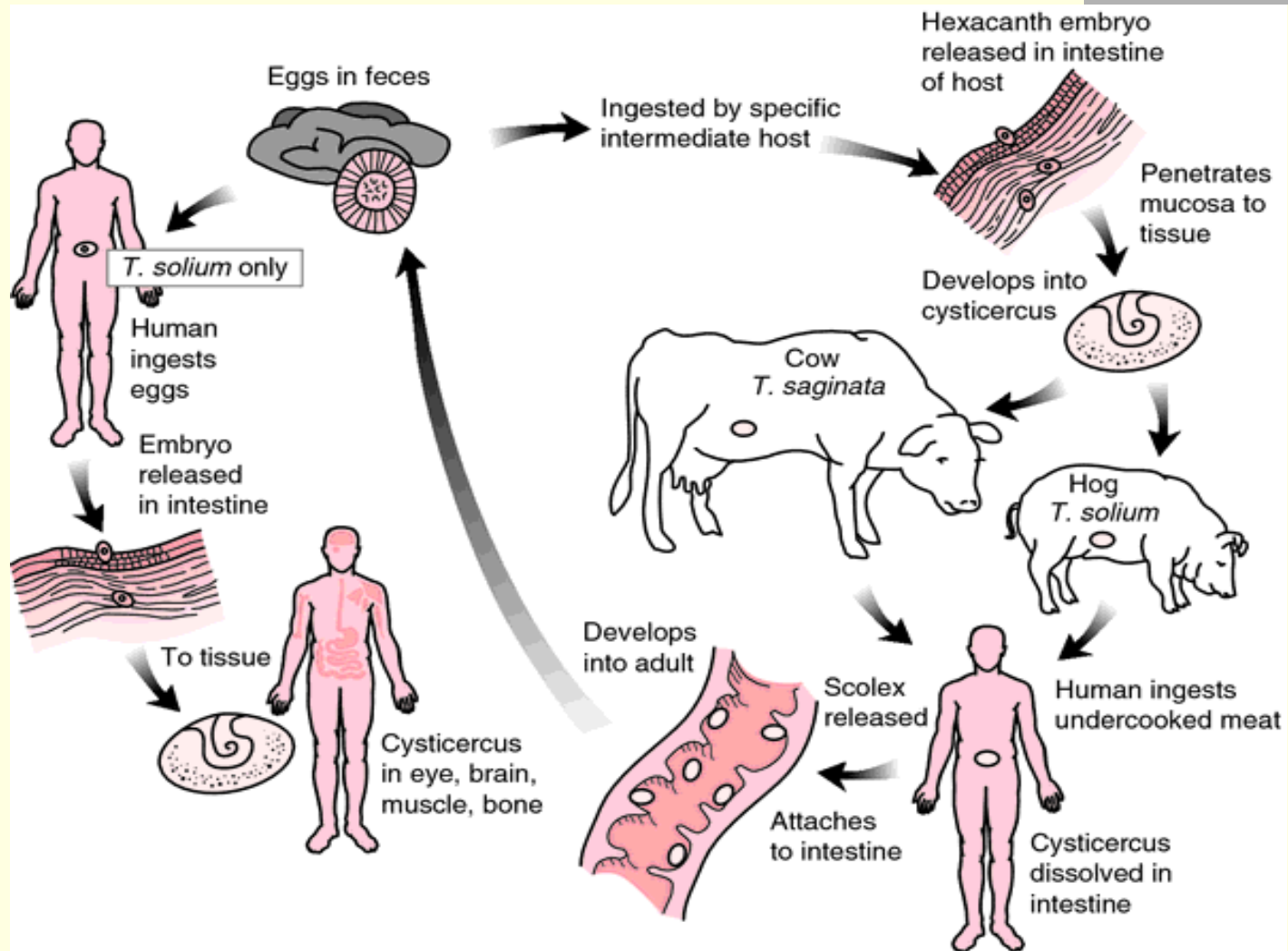
# PROGLOTID

Proglotid, merupakan ruas yang mengandung alat reproduksi (hermaprodit). Terlepas ketika sudah matang seks.



[http://2.bp.blogspot.com/\\_4lwHTsRufBg/S73N58OPhGI/AAAAAA AACv0/qavCU09-t9l/s1600/cestoda%2Btaenia%2Bsolium%2Bscolex%2Bproglotid.bmp](http://2.bp.blogspot.com/_4lwHTsRufBg/S73N58OPhGI/AAAAAA AACv0/qavCU09-t9l/s1600/cestoda%2Btaenia%2Bsolium%2Bscolex%2Bproglotid.bmp)

# SIKLUS CACING PITA



# Perkembangan larva cacing pita

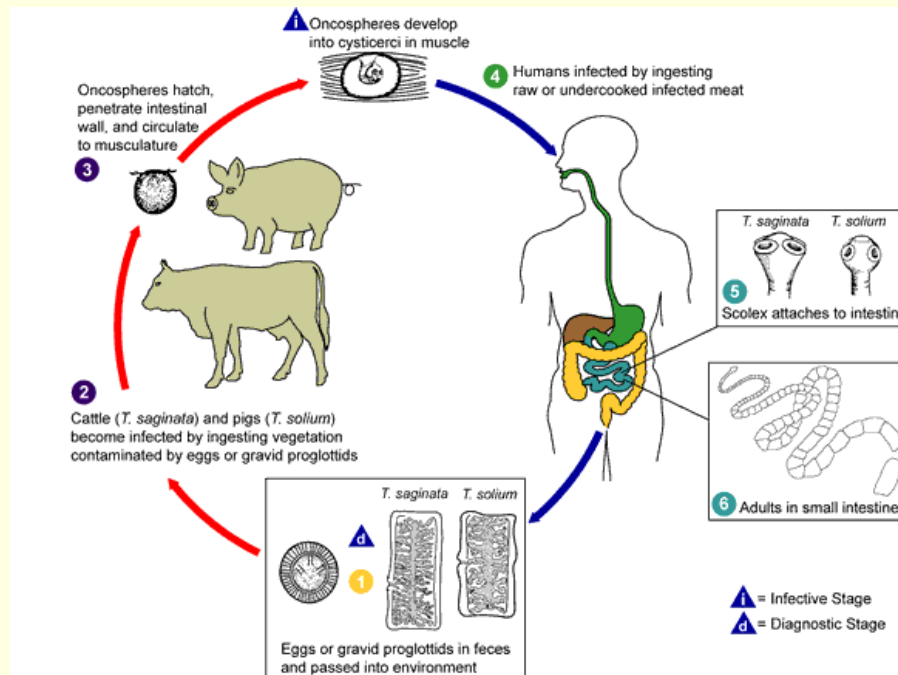
---

- Proglotid ----- ruas cacing yg matang
- Telur ----- terbawa tinja
- Larva onkosfer----- dalam makanan BABI
- Larva heksakan ---- dalam usus BABI
- Kista sistiserkus ---- dalam otot/daging BABI
- Cacing dewasa ---dalam usus MANUSIA



# INANG CACING PITA

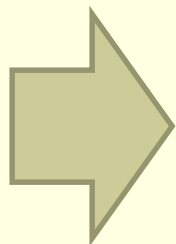
- CACING DEWASA : MANUSIA
- LARVA : - BABI, - SAPI



# Peranan Cacing Pipih?



- Hidup bebas >>> Planaria
- Parasit >>> Cacing Hati, cacing Pita
- Hewan perantara : Sapi, Domba, Babi, Keong, Ikan.



NEMATHELMINTHES

ANELIDA

