

# ***ECHINODERMATA***

CIRI  
KLASIFIKASI  
PERANAN

# CIRI ECHINODERMATA

---

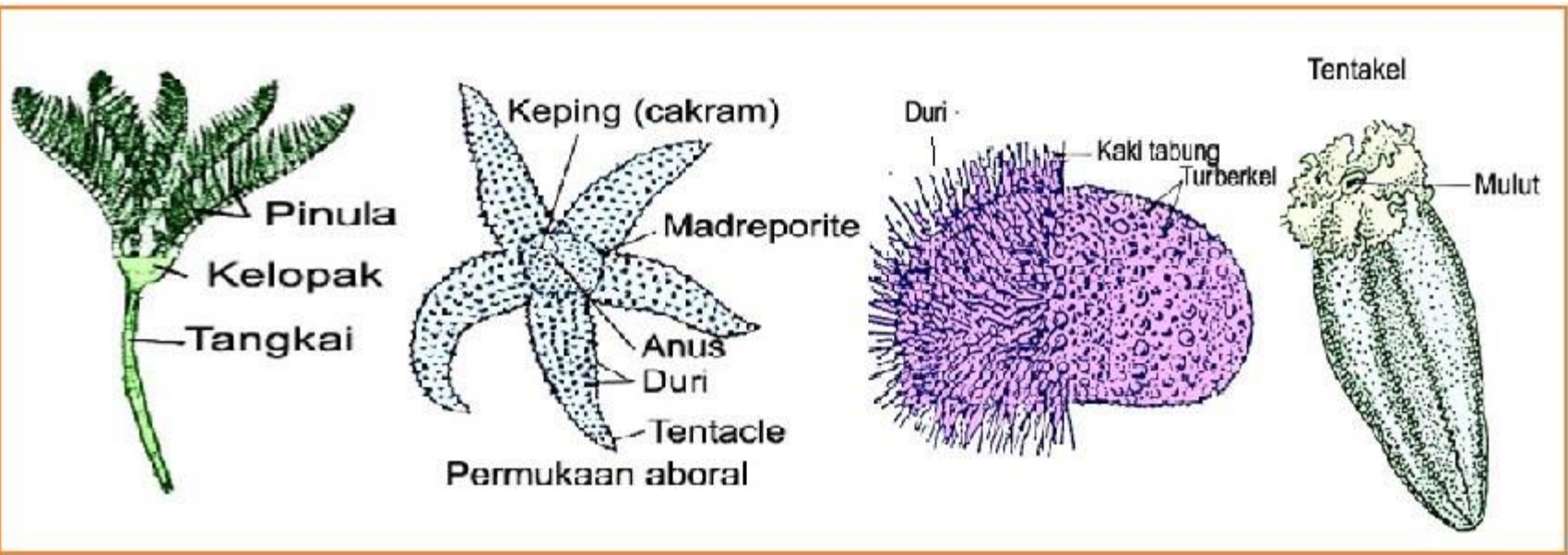
- Kulit berduri
- Triploblastik selomata
- Simetri radial
- Sisi oral di permukaan bawah
- Alat gerak : sistem ambulakral
- Alat pernapasan disebut pediselaria → insang dilindungi duri
- Habitat laut

# KLASIFIKASI / Contoh Hewan

---

- |                 |   |                    |
|-----------------|---|--------------------|
| ● ASTEROIDEA    | → | ● BINTANG LAUT     |
| ● OPHIUROIDEA   | → | ● BINTANG MENGULAR |
| ● HOLOTHUROIDEA | → | ● TERIPANG         |
| ● ECHINOIDEA    | → | ● LANDAK LAUT      |
| ● CRYNOIDEA     | → | ● LILI LAUT        |

# ECHINODERMATA



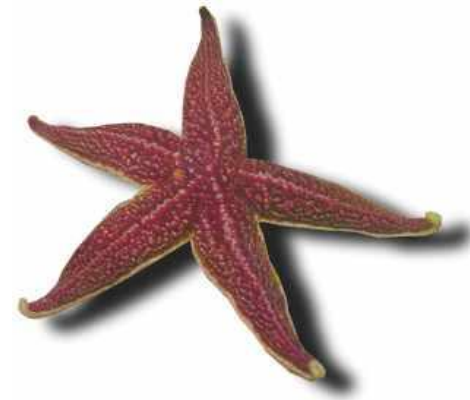
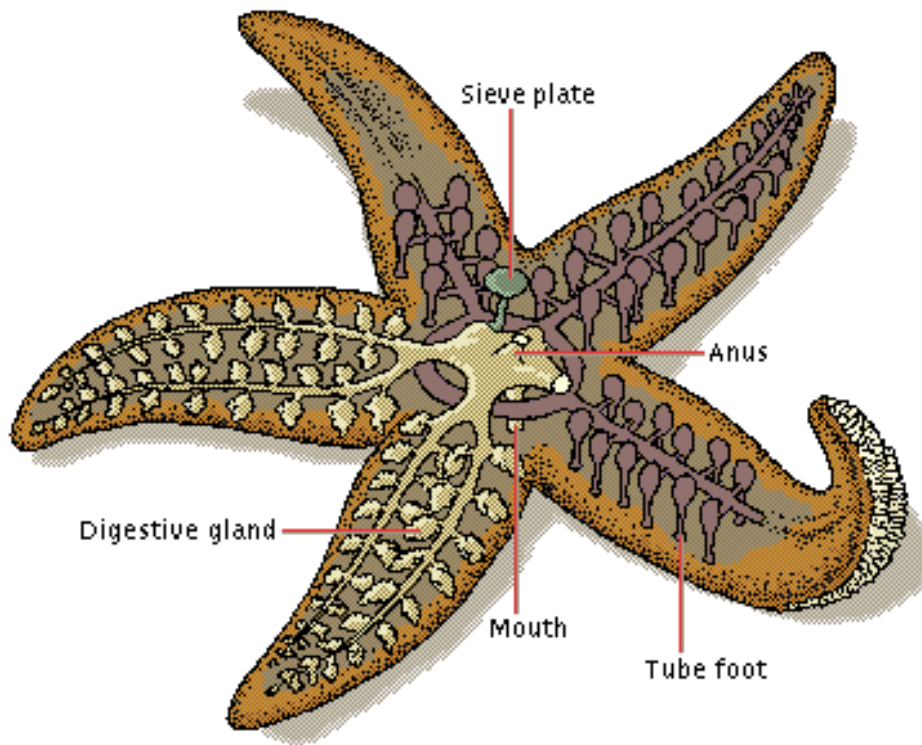
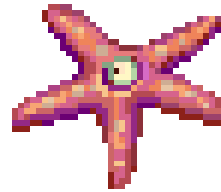
LILI LAUT

BINTANG LAUT

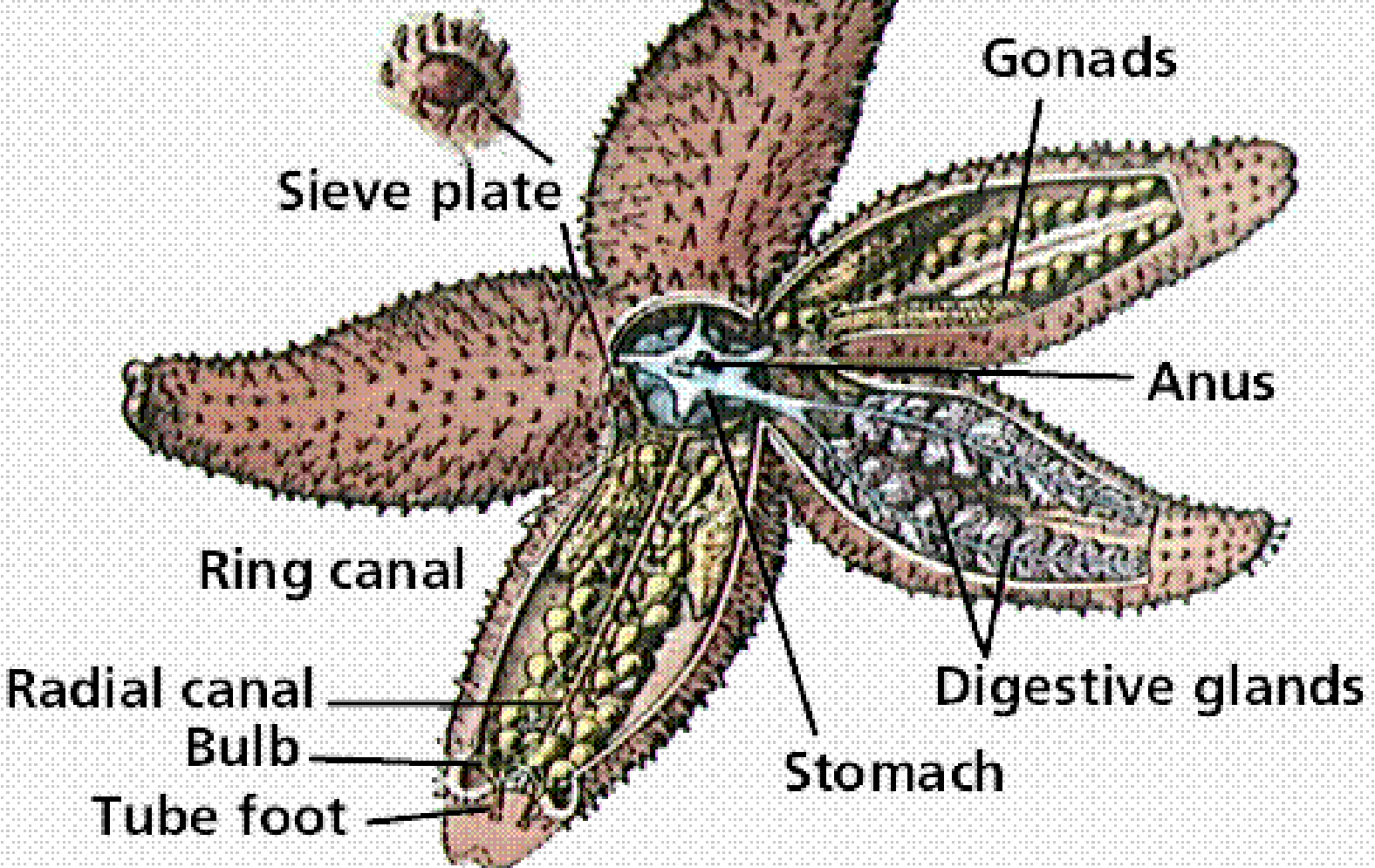
LANDAK LAUT

TRIPANG

# Bintang laut...



Adult sea star

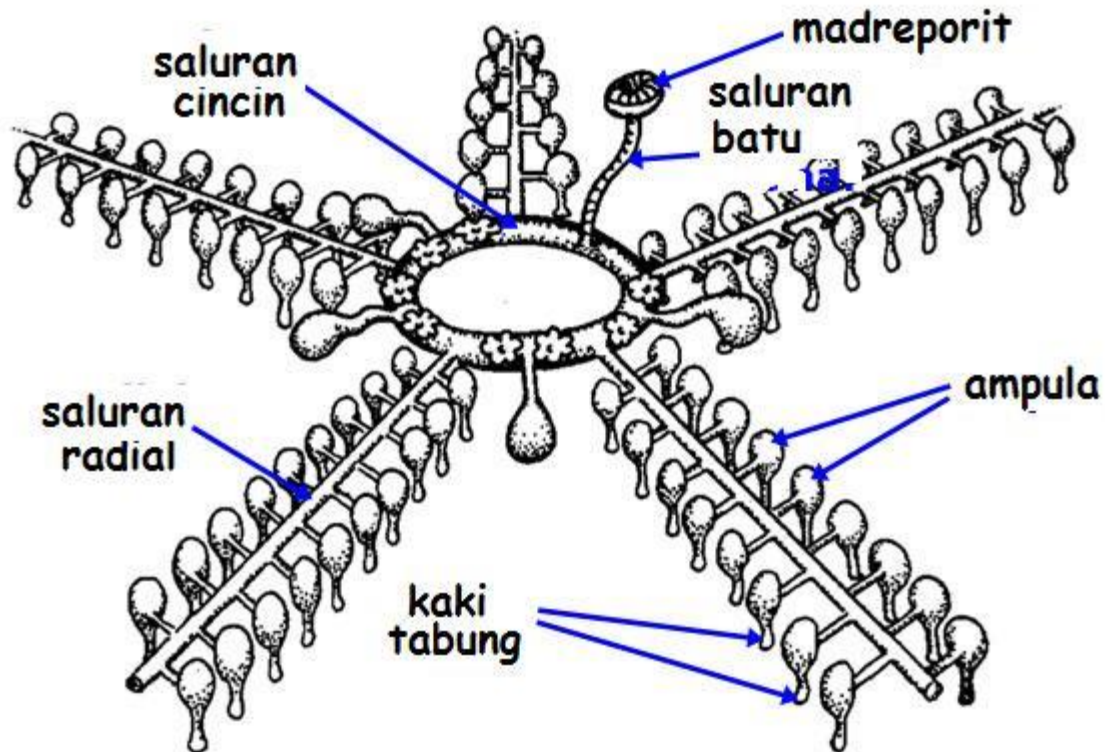


**AMBULAKRAL**



## SISTEM TUBUH ECHINODERMATA

---



<https://www.google.com/search?hl=en&site=imghp&tbm=isch&source>



# LANDAK LAUT dan Bulu babi



Landak laut : *Diadema antillarum*

Bentuk lonjong, duri panjang



Bulu Babi : *Temnopleurus alexandrii*

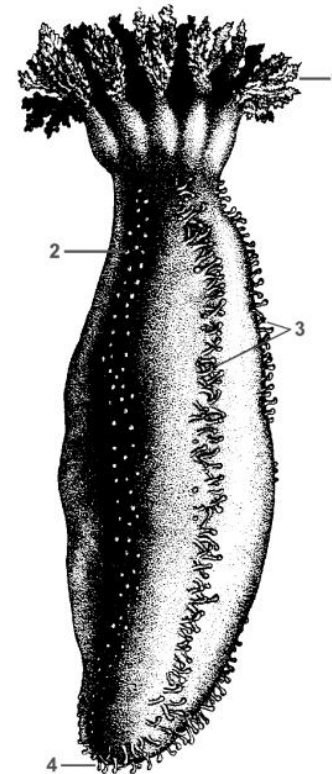
Bentuk bulat, duri pendek

# TERIPANG

---



Disebut juga gamat / hoi sum



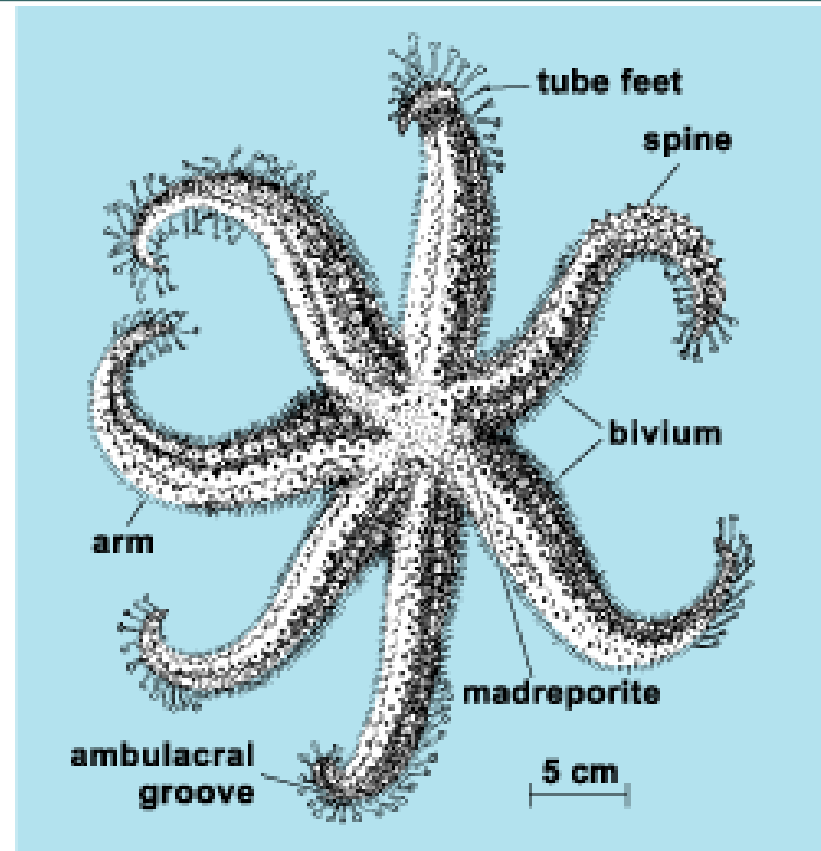
- Crinoidea/ Lili Laut



LILI LAUT



- OPHIUROIDEA / BINTANG MENGULAR



# **PERANAN?**

---

- Pemakan sampah organik di laut
- Teripang sebagai sumber protein

# **SELAMAT BELAJAR...**

---

